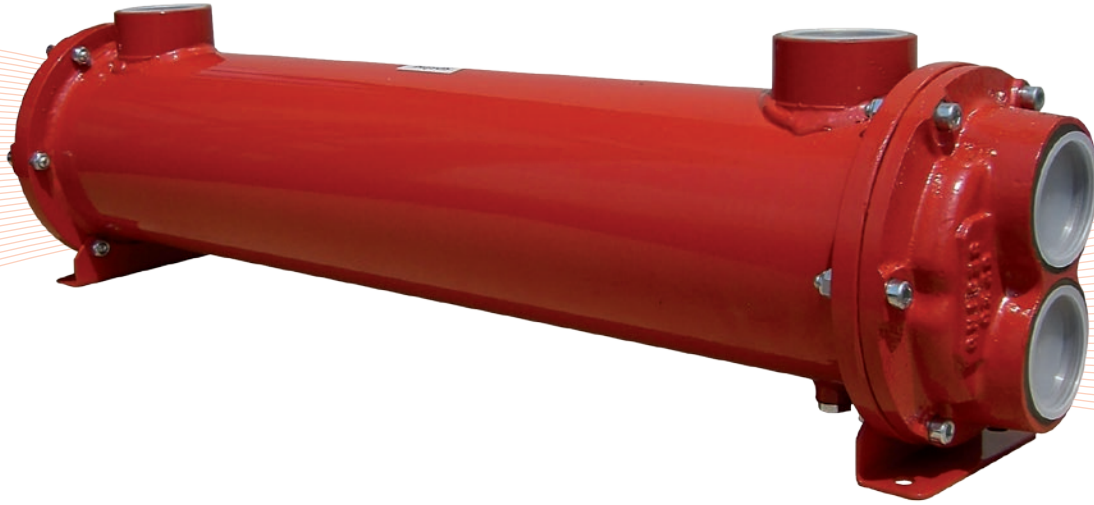
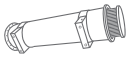


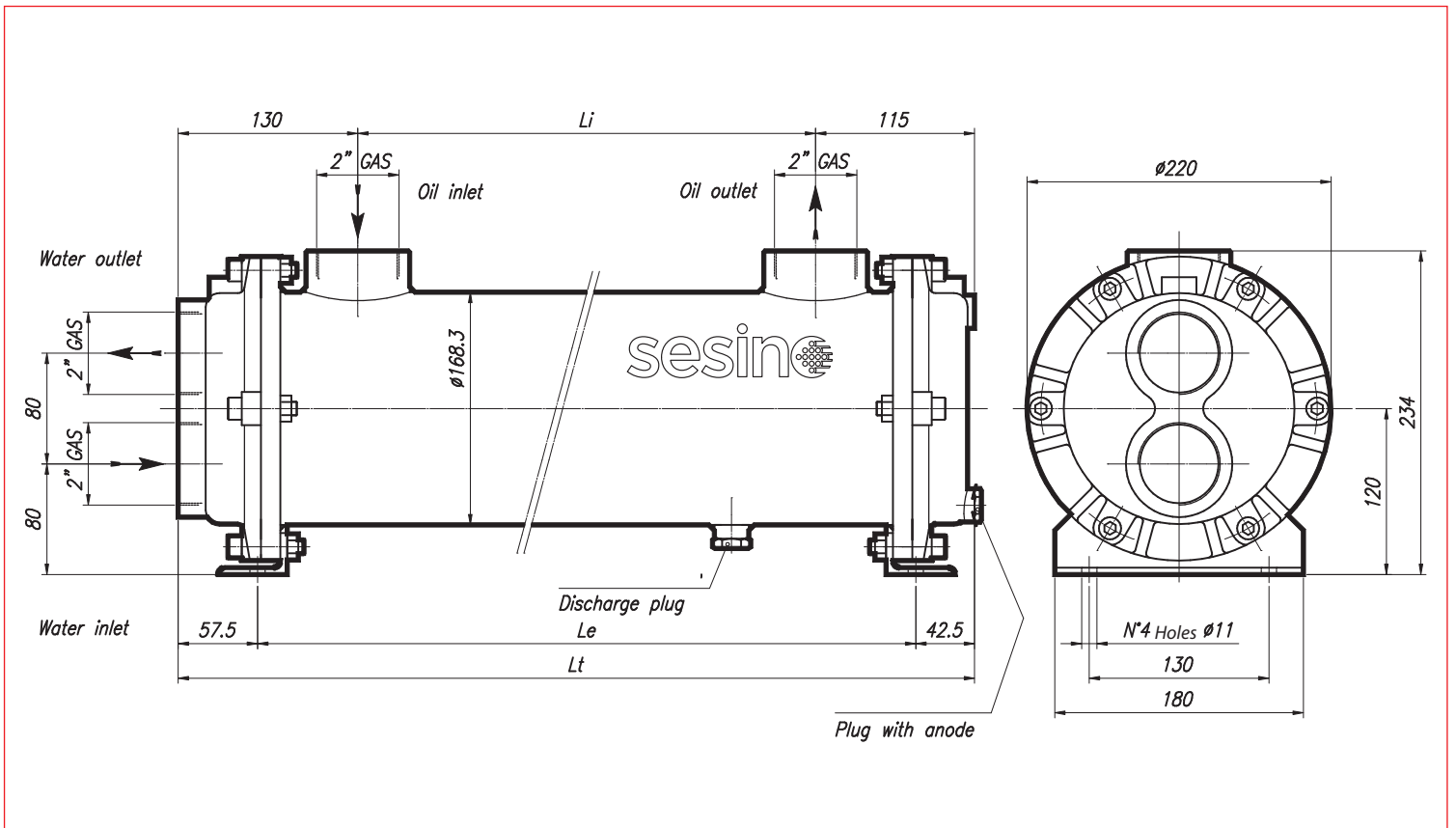
# MS 172/10 P



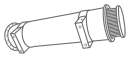
CONSTRUCTION MATERIALS		
SHELL	TUBES	END COVERS
CARBON STEEL*	COPPER*	CAST IRON*
STAINLESS STEEL	STAINLESS STEEL	STAINLESS STEEL
BRASS	CuNi (water sea)	BRONZE

- Dimensions and technical characteristics are not binding

\*standard



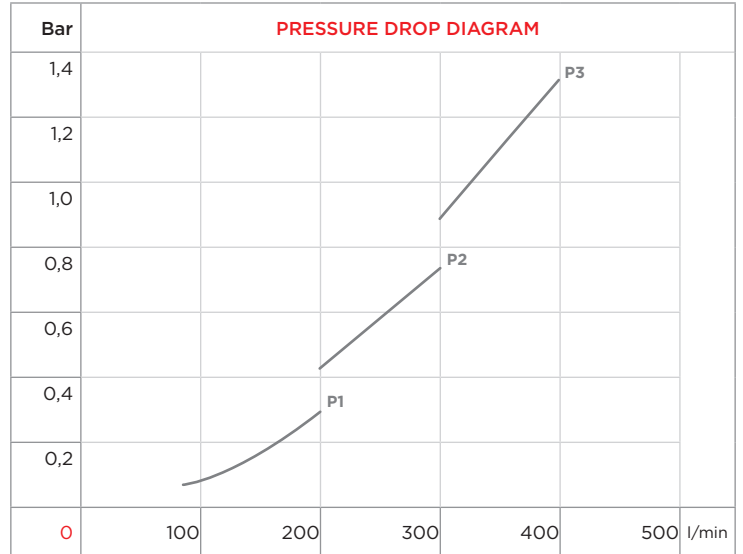
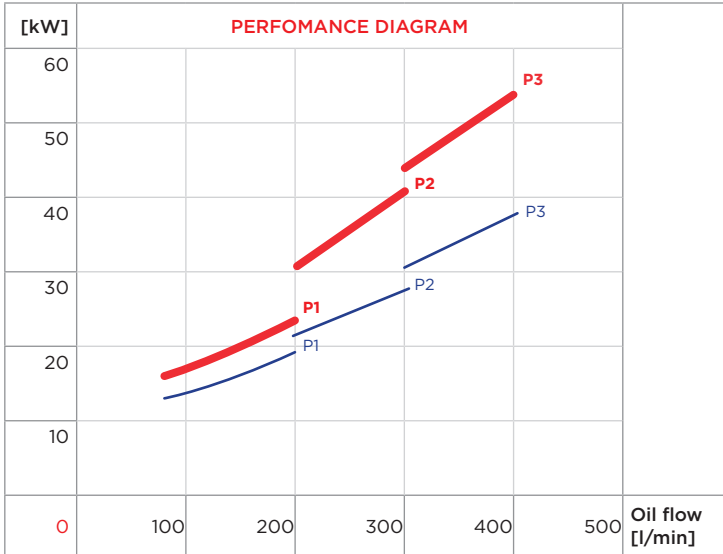
TYPE	CODE	OIL FLOW l/min	WATER FLOW l/min	kW MIN water flow		kW MAX water flow		WEIGHT kg	DIMENSIONS		
				$\Delta T_m$ 25° C		$\Delta T_m$ 25° C			Li	Le	Lt
MS 172/10 P1	2SC172/10P1	80-200	67,5-270	13	18	16	24	36	355	500	600
MS 172/10 P2	2SC172/10P2	200-300	67,5-270	22	28	31	41	42,5	505	650	750
MS 172/10 P3	2SC172/10P3	300-400	67,5-270	31	38	44	55	54,5	655	800	900
MS 172/10 P4	2SC172/10P4	120-280	67,5-270	26	39	35	56	63	830	975	1075
MS 172/10 P5	2SC172/10P5	280-400	67,5-270	51	57	69	88	71,5	1005	1150	1250
MS 172/10 P6	2SC172/10P6	100-300	67,5-270	46	61	61	85	79	1155	1300	1400
MS 172/10 P7	2SC172/10P7	300-500	67,5-270	69	89	90	115	88,5	1355	1500	1600



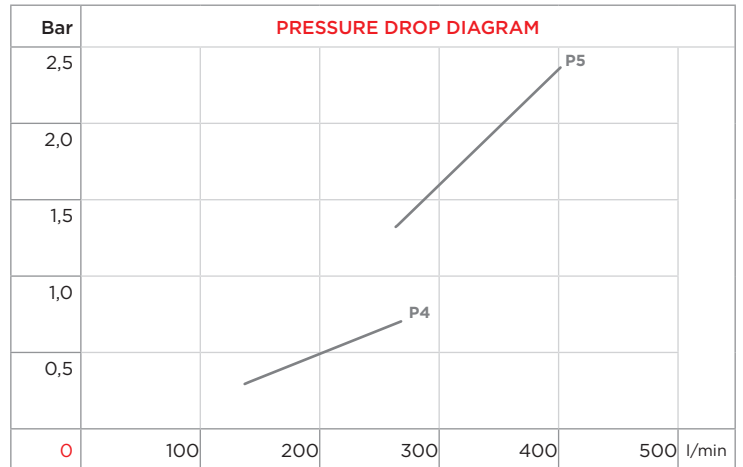
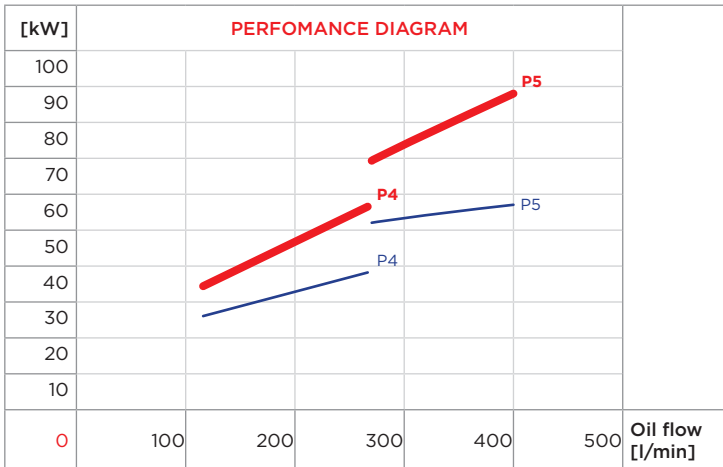
WATER FLOW RATE:



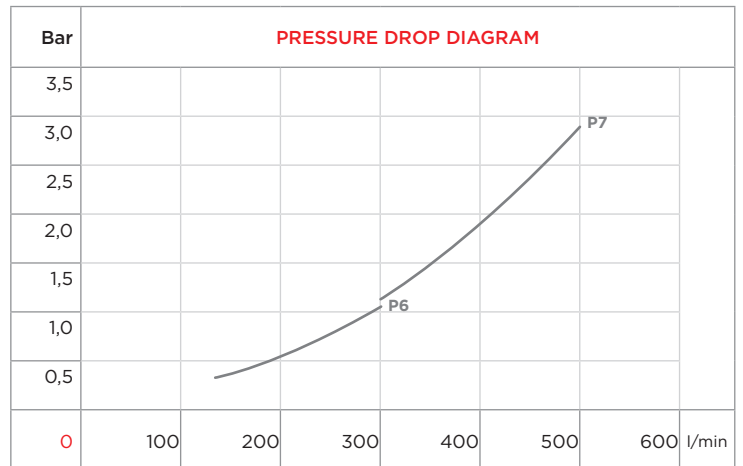
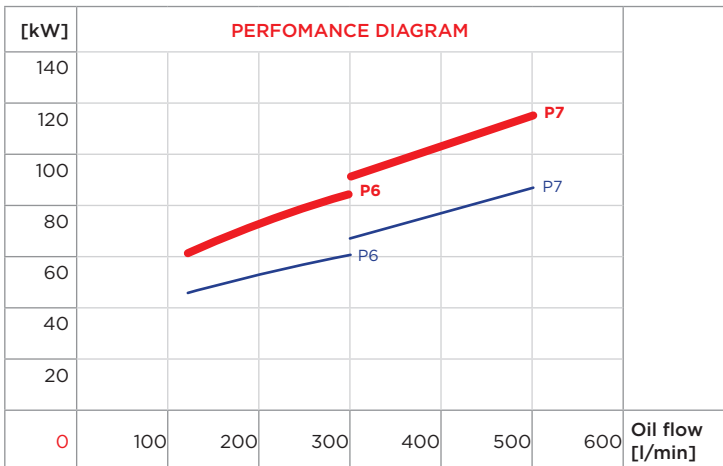
P1 P2 P3



P4 P5



P6 P7



$\Delta T_m$	10	15	20	25	30	35	40
f	2,5	1,67	1,25	1	0,83	0,71	0,63

cSt	22	30	46	68	100	150	220
f	0,4	0,6	1	1,5	2,3	3,3	4,6