

Inline flow indicator with weld end full view and standard version



- Guaranteed crevice free
- Fully traceable wetted materials
- Suitable for CIP and SIP
- Glass mounted without stress

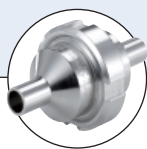
Hygienic Processing Components....



Type BBS-05
Quick connect



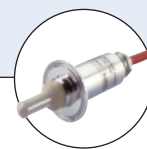
Type BBS-07
Block flange



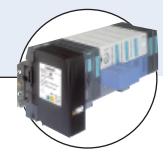
Type BBS-10
Ball check valve



Type 2103
Diaphragm valve



Type 8221
Conductivity sensor



Type 8650
Process Automation

These sterile flow indicators can be installed in any position to observe liquid flow in any direction. The flow indicator is usually employed to detect either the presence or absence of solutions, or to observe fluids for turbulence, colour or clarity. They are ideal for high purity applications.

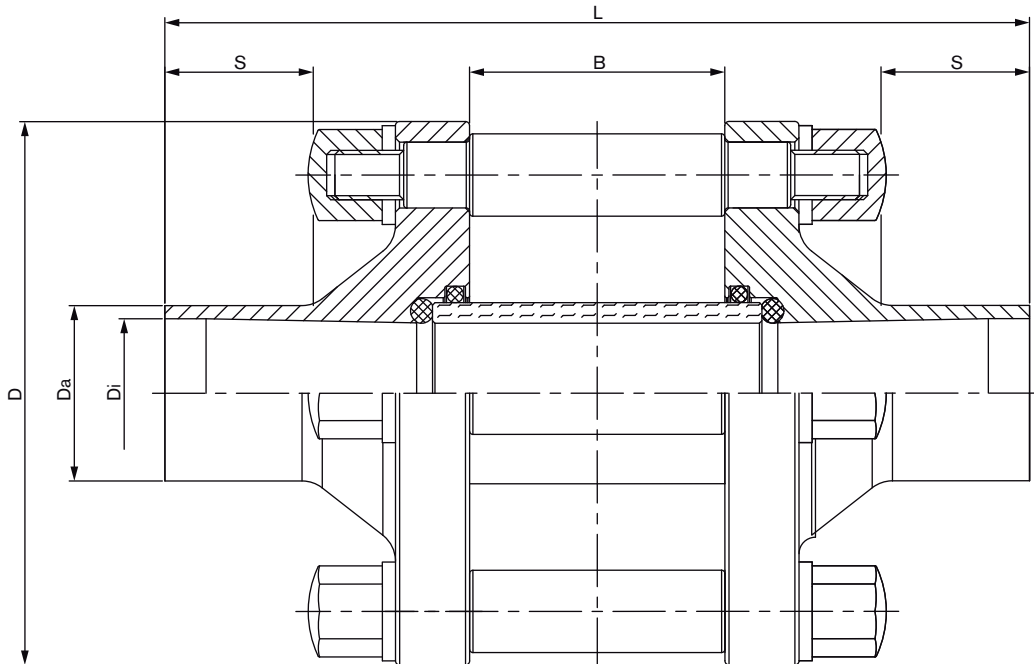
The standard view indicator offers excellent process visualization whilst protecting the glass and the full view version allows a 360° process vision, this means you can observe fluid flow from any position.

Technical data	
Available standard sizes	ISO DN08 to DN100 BS-OD DN1/4" to DN4"
Full view version	DIN DN08 to DN100
Standard version	ISO DN08 to DN50 BS-OD DN1/4" to DN2" DIN DN08 to DN50 Customized on request
Material medium contact	Stainless steel 1.4435 BN2 (316L), special materials on request
Material medium separated	1.4305 or equivalent
Glass	Borosilicate glass
Seals	O-Ring, EPDM, FEP (PTFE coated silicone O-Ring) Special seal material e.g. silicone, pure PTFE etc. on request
Surface quality	Medium contacted surface < Ra 0,8µm, electro polished, finer surface on request
Operating temperature	Dependent upon the chosen seal material
Ambient temperature	-20 to +80 °C
Media	Gases or liquids
Operating pressure	-1 up to +8 bar (higher pressure on request)
Applicable Standards	Pipe connection acc. to DIN 11866 ISO-Dimensions Series B (ISO 4200) DIN-Dimensions Series A (DIN 11850) BS-OD-Dimensions Series C (ASME BPE)
Certifications	Material 3.1 FDA for all recommended seal materials USP VI for EPDM, FEP and PTFE

Applications

- Biotechnology
- Pharmaceutical
- Chemical industry
- Dairy
- Food
- Cosmetic

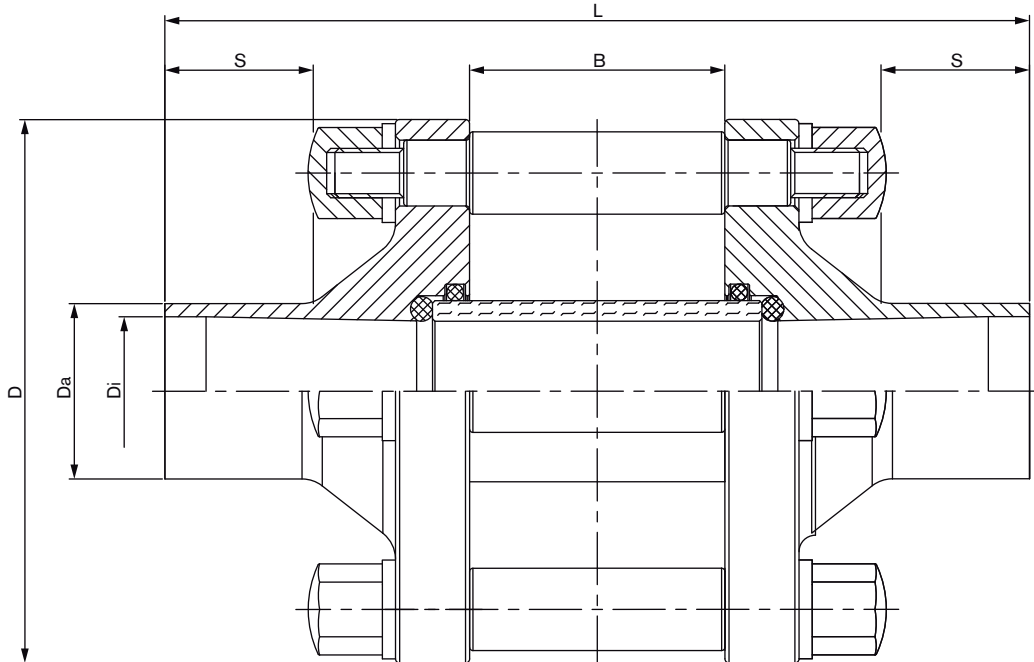
Dimension [mm] Inline flow indicator with weld end / full view version



Orifice	D [mm]	Da [mm]	Di [mm]	L [mm]	S [mm]	B [mm]	Item no. EPDM
ISO Dimensions Inline flow indicator with weld end / full view version							
ISO DN08	59.00	13.50	10.30	91.50	18.00	19.50	740 880
ISO DN10	59.00	17.20	14.00	98.00	18.00	26.40	740 886
ISO DN15	66.00	21.30	18.10	105.00	18.00	31.00	740 904
ISO DN20	73.00	26.90	23.70	111.00	18.00	32.00	740 910
ISO DN25	73.00	33.70	29.70	111.00	18.00	32.00	740 920
ISO DN32	82.00	42.40	38.40	125.00	20.00	41.20	740 926
ISO DN40	88.00	48.30	44.30	156.00	20.00	67.00	740 935
ISO DN50	110.00	60.30	56.30	171.00	20.00	80.00	740 944
ISO DN65	135.00	76.10	72.10	193.00	25.00	97.00	740 950
ISO DN80	138.00	88.90	84.30	187.00	25.00	97.00	740 959
ISO DN100	170.00	114.30	109.70	214.00	25.00	118.40	740 892

Orifice	D [mm]	Da [mm]	Di [mm]	L [mm]	S [mm]	B [mm]	Item no. FEP
ISO Dimensions Inline flow indicator with weld end / full view version continued							
ISO DN08	59.00	13.50	10.30	91.50	18.00	19.50	740 883
ISO DN10	59.00	17.20	14.00	98.00	18.00	26.40	740 889
ISO DN15	66.00	21.30	18.10	105.00	18.00	31.00	740 907
ISO DN20	73.00	26.90	23.70	111.00	18.00	32.00	740 913
ISO DN25	73.00	33.70	29.70	111.00	18.00	32.00	740 923
ISO DN32	82.00	42.40	38.40	125.00	20.00	41.20	740 929
ISO DN40	88.00	48.30	44.30	156.00	20.00	67.00	740 938
ISO DN50	110.00	60.30	56.30	171.00	20.00	80.00	740 947
ISO DN65	135.00	76.10	72.10	193.00	25.00	97.00	740 953
ISO DN80	138.00	88.90	84.30	187.00	25.00	97.00	740 962
ISO DN100	170.00	114.30	109.70	214.00	25.00	118.40	740 895

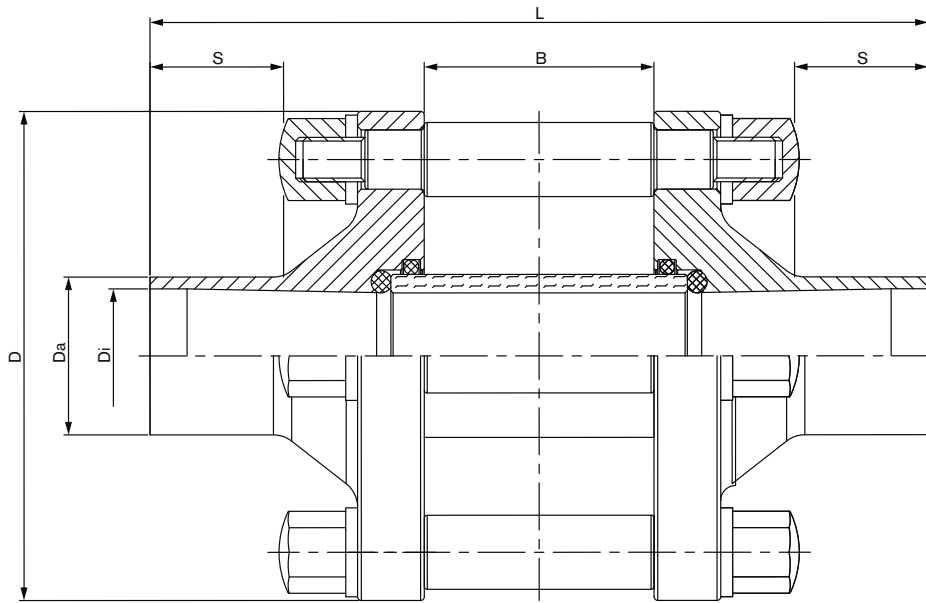
Dimension [mm] Inline flow indicator with weld end / full view version



Orifice	D [mm]	Da [mm]	Di [mm]	L [mm]	S [mm]	B [mm]	Item no. EPDM
BS-OD Dimensions Inline flow indicator with weld end / full view version							
ASME DN1/4"	50.00	6.35	4.55	127.00	38.10	19.50	on request
ASME DN3/8"	50.00	9.53	7.75	129.00	38.10	19.50	on request
ASME DN1/2"	59.00	12.70	9.40	133.00	38.10	19.50	740 831
ASME DN3/4"	65.00	19.05	15.75	146.00	38.10	33.00	740 837
ASME DN1"	73.00	25.40	22.10	149.00	38.10	36.00	740 843
ASME DN1 1/2"	82.00	38.10	34.80	152.00	38.10	36.00	740 848
ASME DN2"	100.00	50.80	47.50	190.00	38.10	54.00	740 854
ASME DN2 1/2"	124.00	63.50	60.20	222.00	38.10	67.00	740 860
ASME DN3"	135.00	76.20	72.90	241.00	38.10	97.00	740 866
ASME DN4"	159.00	101.60	97.40	263.00	38.10	119.00	740 872

Orifice	D [mm]	Da [mm]	Di [mm]	L [mm]	S [mm]	B [mm]	Item no. FEP
BS-OD Dimensions Inline flow indicator with weld end / full view version continued							
ASME DN1/4"	50.00	6.35	4.55	127.00	38.10	19.50	on request
ASME DN3/8"	50.00	9.53	7.75	129.00	38.10	19.50	on request
ASME DN1/2"	59.00	12.70	9.40	133.00	38.10	19.50	740 834
ASME DN3/4"	65.00	19.05	15.75	146.00	38.10	33.00	740 839
ASME DN1"	73.00	25.40	22.10	149.00	38.10	36.00	740 845
ASME DN1 1/2"	82.00	38.10	34.80	152.00	38.10	36.00	740 851
ASME DN2"	100.00	50.80	47.50	190.00	38.10	54.00	740 857
ASME DN2 1/2"	124.00	63.50	60.20	222.00	38.10	67.00	740 863
ASME DN3"	135.00	76.20	72.90	241.00	38.10	97.00	740 869
ASME DN4"	159.00	101.60	97.40	263.00	38.10	119.00	740 877

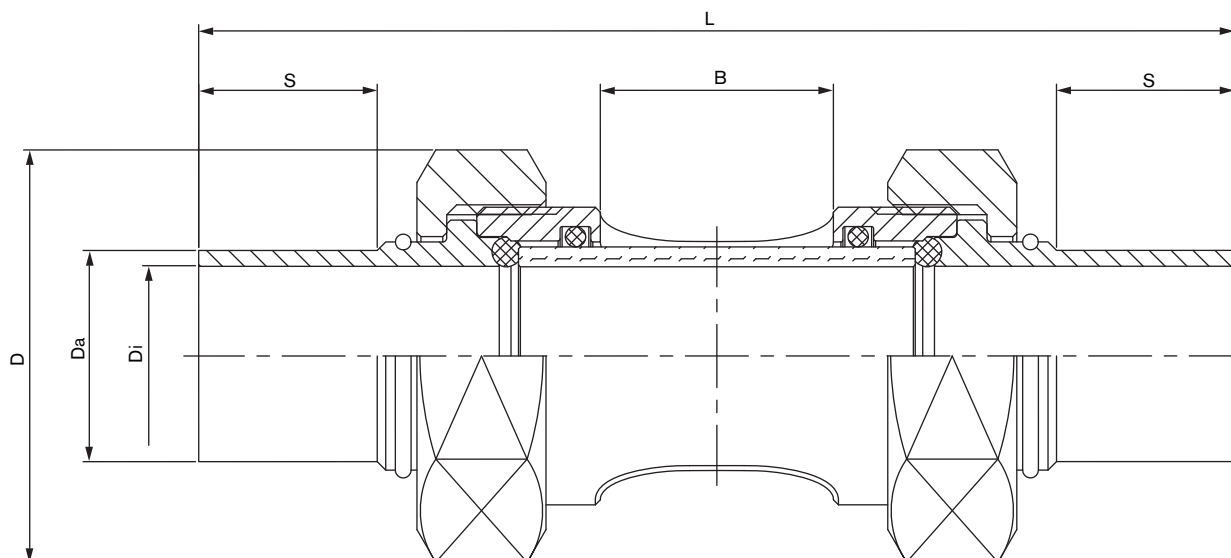
Dimension [mm] Inline flow indicator with weld end / full view version



Orifice	D [mm]	Da [mm]	Di [mm]	L [mm]	S [mm]	B [mm]	Item no. EPDM
DIN Dimensions Inline flow indicator with weld end / full view version							
DIN DN08	59.00	10.00	8.00	91.50	18.00	19.50	744 847
DIN DN10	59.00	12.00	10.00	98.00	18.00	19.50	on request
DIN DN10	59.00	13.00	10.00	98.00	18.00	19.50	on request
DIN DN15	65.00	19.00	16.00	105.00	18.00	33.00	on request
DIN DN20	70.00	23.00	20.00	105.00	18.00	33.00	744 856
DIN DN25	73.00	29.00	26.00	115.00	18.00	36.00	743 676
DIN DN32	82.00	35.00	32.00	115.00	18.00	36.00	744 859
DIN DN40	82.00	41.00	38.00	125.00	20.00	41.20	747 084
DIN DN50	110.00	53.00	50.00	156.00	20.00	65.00	on request
DIN DN65	124.00	70.00	66.00	158.00	20.00	67.00	740 828
DIN DN80	145.00	85.00	81.00	207.00	20.00	97.00	744 865
DIN DN100	160.00	104.00	100.00	214.00	25.00	118.40	744 852

Orifice	D [mm]	Da [mm]	Di [mm]	L [mm]	S [mm]	B [mm]	Item no. FEP
DIN Dimensions Inline flow indicator with weld end / full view version continued							
DIN DN08	59.00	10.00	8.00	91.50	18.00	19.50	on request
DIN DN10	59.00	12.00	10.00	98.00	18.00	19.50	on request
DIN DN10	59.00	13.00	10.00	98.00	18.00	19.50	on request
DIN DN15	65.00	19.00	16.00	105.00	18.00	33.00	on request
DIN DN20	70.00	23.00	20.00	105.00	18.00	33.00	on request
DIN DN25	73.00	29.00	26.00	115.00	18.00	36.00	on request
DIN DN32	82.00	35.00	32.00	115.00	18.00	36.00	on request
DIN DN40	82.00	41.00	38.00	125.00	20.00	41.20	on request
DIN DN50	110.00	53.00	50.00	156.00	20.00	65.00	on request
DIN DN65	124.00	70.00	66.00	158.00	20.00	67.00	on request
DIN DN80	145.00	85.00	81.00	207.00	20.00	97.00	on request
DIN DN100	160.00	104.00	100.00	214.00	25.00	118.40	on request

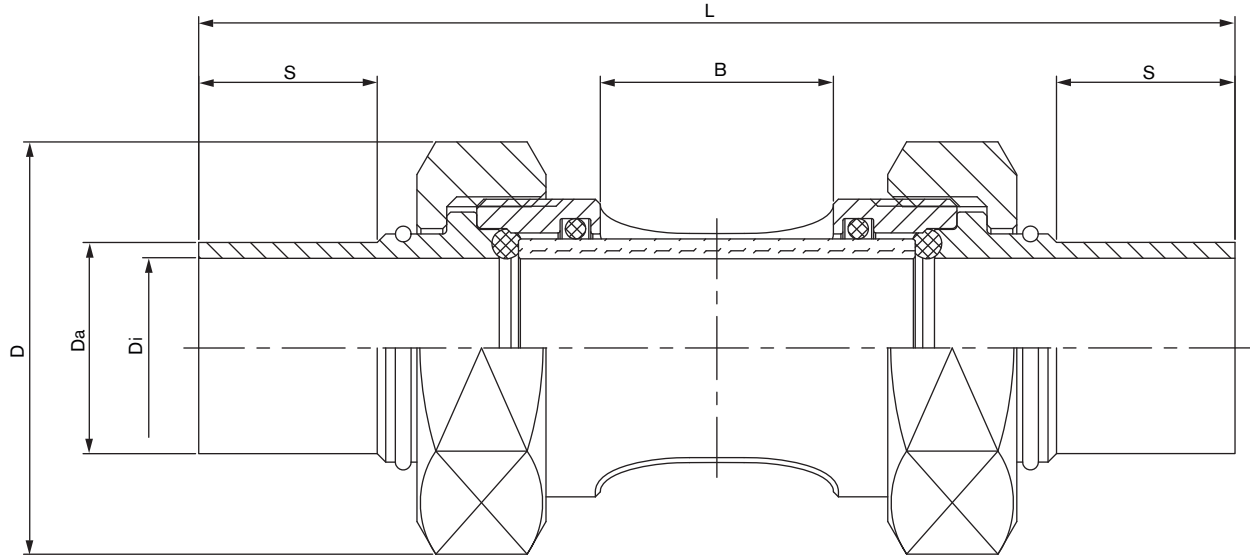
Dimension [mm] Inline flow indicator with weld end / standard



Orifice	D [mm]	Da [mm]	Di [mm]	L [mm]	S [mm]	B [mm]	Item no. EPDM
ISO Dimensions Inline flow indicator with weld end / standard							
ISO DN08	31.18	13.50	10.30	92.00	18.00	18.00	741 249
ISO DN10	36.50	17.20	14.00	98.50	18.00	21.00	741 257
ISO DN15	41.57	19.00	16.00	104.50	18.00	23.50	741 266
ISO DN20	48.30	26.90	23.70	104.50	18.00	24.00	741 275
ISO DN25	52.00	33.70	29.70	106.00	18.00	18.00	741 285
ISO DN32	62.00	42.40	38.40	122.50	18.00	31.00	741 294
ISO DN40	76.00	48.30	44.30	143.00	18.00	59.40	741 302
ISO DN50	88.00	60.30	56.30	165.00	18.00	79.40	741 309

Orifice	D [mm]	Da [mm]	Di [mm]	L [mm]	S [mm]	B [mm]	Item no. FEP
ISO Dimensions Inline flow indicator with weld end / standard continued							
ISO DN08	31.18	13.50	10.30	92.00	18.00	18.00	741 251
ISO DN10	36.50	17.20	14.00	98.50	18.00	21.00	741 259
ISO DN15	41.57	19.00	16.00	104.50	18.00	23.50	741 268
ISO DN20	48.30	26.90	23.70	104.50	18.00	24.00	741 279
ISO DN25	52.00	33.70	29.70	106.00	18.00	18.00	741 287
ISO DN32	62.00	42.40	38.40	122.50	18.00	31.00	741 296
ISO DN40	76.00	48.30	44.30	143.00	18.00	59.40	741 303
ISO DN50	88.00	60.30	56.30	165.00	18.00	79.40	741 311

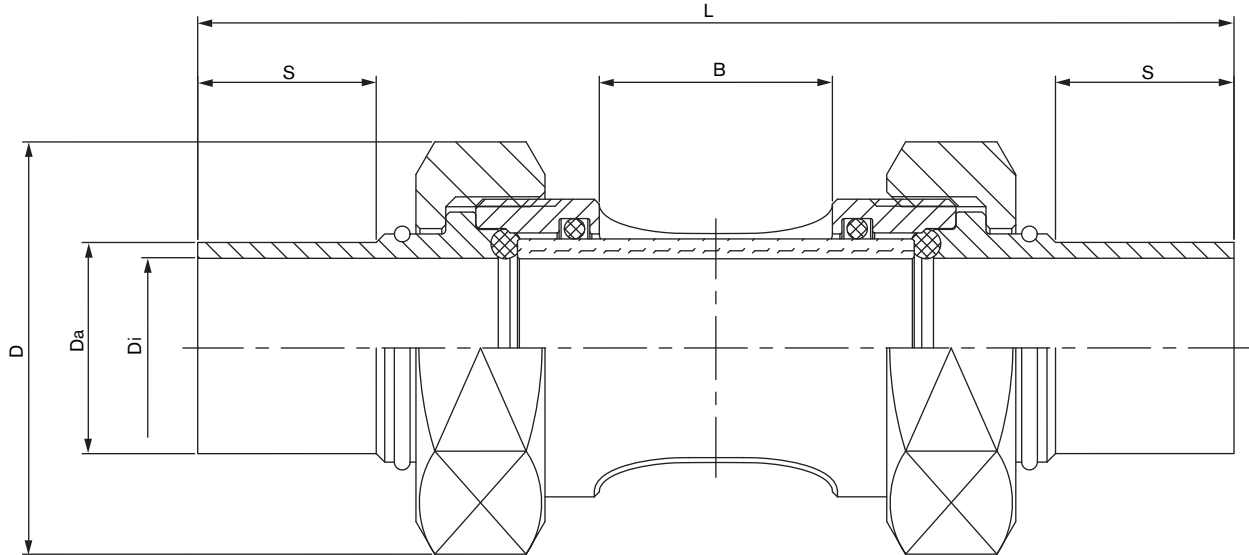
Dimension [mm] Inline flow indicator with weld end / standard



Orifice	D [mm]	Da [mm]	Di [mm]	L [mm]	S [mm]	B [mm]	Item no. EPDM
BS-OD Dimensions Inline flow indicator with weld end / standard							
ASME DN1/4"	21.94	6.35	4.60	92.00	18.00	20.20	744 910
ASME DN3/8"	25.40	9.50	7.70	107.30	25.10	21.00	741 181
ASME DN1/2"	31.18	12.70	9.40	107.00	25.40	18.00	730 000
ASME DN3/4"	36.95	19.05	15.75	120.00	25.10	20.00	741 189
ASME DN1"	48.30	25.40	22.10	121.00	25.40	30.00	741 193
ASME DN1 1/2"	62.00	38.10	34.80	136.00	25.40	32.00	741 199
ASME DN2"	80.00	50.80	47.50	161.50	25.40	48.00	741 203

Orifice	D [mm]	Da [mm]	Di [mm]	L [mm]	S [mm]	B [mm]	Item no. FEP
BS-OD Dimensions Inline flow indicator with weld end / standard continued							
ASME DN1/4"	21.94	6.35	4.60	92.00	18.00	20.20	on request
ASME DN3/8"	25.40	9.50	7.70	107.30	25.10	21.00	741 183
ASME DN1/2"	31.18	12.70	9.40	107.00	25.40	18.00	741 187
ASME DN3/4"	36.95	19.05	15.75	120.00	25.10	20.00	741 191
ASME DN1"	48.30	25.40	22.10	121.00	25.40	30.00	741 195
ASME DN1 1/2"	62.00	38.10	34.80	136.00	25.40	32.00	741 201
ASME DN2"	80.00	50.80	47.50	161.50	25.40	48.00	741 205

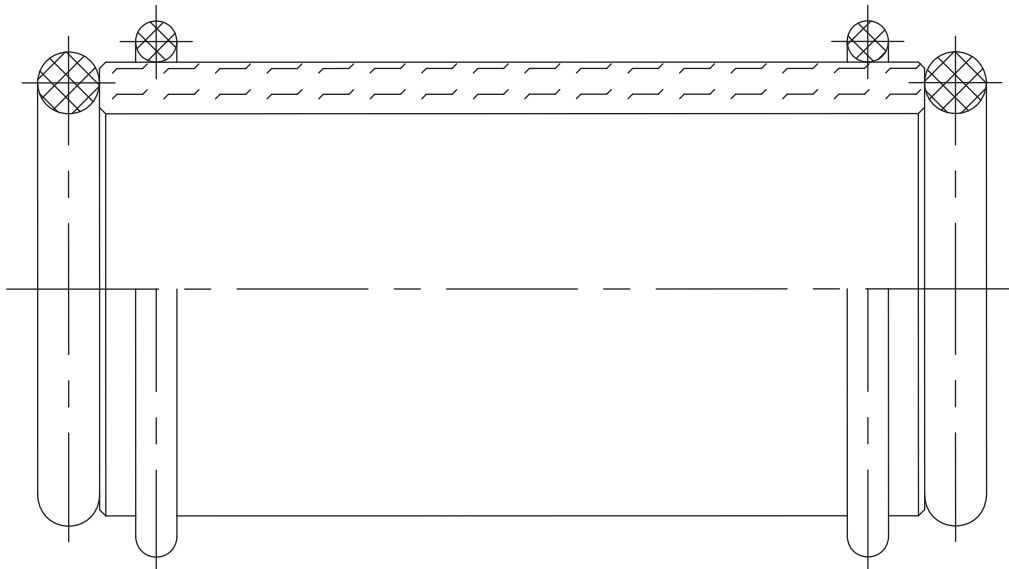
Dimension [mm] Inline flow indicator with weld end / standard



Orifice	D [mm]	Da [mm]	Di [mm]	L [mm]	S [mm]	B [mm]	Item no. EPDM
DIN Dimensions Inline flow indicator with weld end / standard							
DIN DN08	25.40	10.00	8.00	92.50	18.00	17.00	741 219
DIN DN10	31.18	12.00	10.00	92.00	18.00	18.00	741 221
DIN DN10	31.18	13.00	10.00	92.50	18.00	18.00	on request
DIN DN15	36.95	19.00	16.00	110.00	18.00	20.00	741 224
DIN DN20	48.30	23.00	20.00	110.00	18.00	28.00	741 228
DIN DN25	48.00	29.00	26.00	110.00	18.00	24.00	741 232
DIN DN32	62.00	35.00	32.00	114.50	18.00	24.00	744 918
DIN DN40	62.00	41.00	38.00	122.50	18.00	31.00	744 920
DIN DN50	80.00	53.00	50.00	154.50	18.00	54.00	743 593

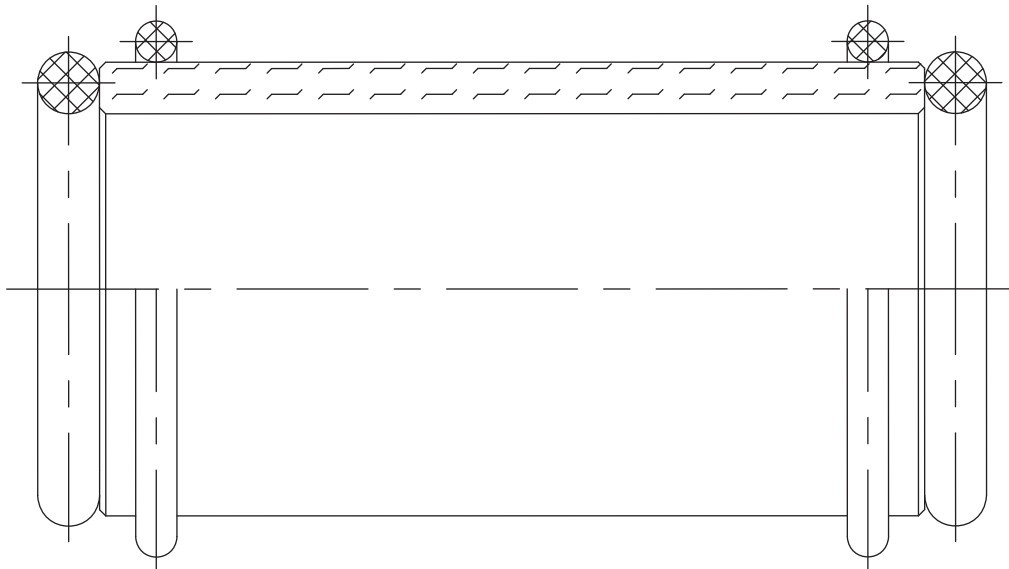
Orifice	D [mm]	Da [mm]	Di [mm]	L [mm]	S [mm]	B [mm]	Item no. FEP
DIN Dimensions Inline flow indicator with weld end / standard continued							
DIN DN08	25.40	10.00	8.00	92.50	18.00	17.00	on request
DIN DN10	31.18	12.00	10.00	92.00	18.00	18.00	on request
DIN DN10	31.18	13.00	10.00	92.50	18.00	18.00	on request
DIN DN15	36.95	19.00	16.00	110.00	18.00	20.00	741 226
DIN DN20	48.30	23.00	20.00	110.00	18.00	28.00	on request
DIN DN25	48.00	29.00	26.00	110.00	18.00	24.00	741 234
DIN DN32	62.00	35.00	32.00	114.50	18.00	24.00	on request
DIN DN40	62.00	41.00	38.00	122.50	18.00	31.00	741 240
DIN DN50	80.00	53.00	50.00	154.50	18.00	54.00	741 244

Spare parts kit for flow indicators



Orifice	Item no. EPDM	Item no. FEP
ISO Spare parts kit (consisting of glass, O-Ring and support ring)		
DN08	740 492	740 495
DN10	740 500	744 722
DN15	740 515	740 518
DN20	740 527	740 530
DN25	740 539	740 542
DN32	740 552	740 555
DN40	740 561	740 564
DN50	740 573	740 575
DN65	744 727	744 728
DN80	740 581	740 581
DN100	744 729	744 724

Spare parts kit for flow indicators



Orifice	Item no. EPDM	Item no. FEP
DIN Spare parts kit (consisting of glass, O-Ring and support ring)		
DN08	740 316	744 678
DN10	744 679	744 680
DN15	744 683	744 684
DN20	744 687	744 688
DN25	744 689	744 690
DN32	744 691	744 692
DN40	744 693	744 694
DN50	740 334	744 695
DN65	744 696	744 697
DN80	744 698	744 699
DN100	744 681	744 682

Orifice	Item no. EPDM	Item no. FEP
BS-OD Spare parts kit (consisting of glass, O-Ring and support ring)		
DN1/4"	744 718	744 719
DN3/8"	744 720	744 721
DN1/2"	740 347	740 350
DN3/4"	740 365	740 368
DN1"	740 381	740 384
DN1 1/2"	740 393	740 396
DN2"	740 417	740 420
DN2 1/2"	740 433	740 436
DN3"	740 446	740 449
DN4"	740 458	740 461

DTS 1000148923 EN Version: D Status: RL (released | freigegeben | valide) printed: 05.05.2014

To find your nearest Bürkert facility, click on the orange box → www.burkert.com

In case of special application conditions,
please consult for advice.

Subject to alterations
© Christian Bürkert GmbH & Co. KG

1405/4_EU-en_00895164

Specification key (other versions on request)

Example **BBS-3F - XX - 00 - 25,0 - AB - XX - LTA - XX - NK52 + NO10**

Specification key

Delivery (LIUM)	
ST	Line Standard inspection glass (part vision)
SV	Line inspection glass full vision
SG	Spare part kit for line inspection glass

Connection Type (VRBT)	
CA	Clamp-connection acc. to DIN 32676-A
CB	Clamp-connection acc. to ISO 2852 / DIN 32676-B
CC	Clamp-connection acc. to ASME BPE / DIN 32676-C
WA	Welded connection acc. to DIN 11850 row 2 / DIN 11866 row A
WB	Welded connection acc. to DIN EN ISO 1127 / ISO 4200 / DIN 11866 row B
WC	Welded connection acc. to ASME BPE / DIN 11866 row C
00	without connection (spare part kit)

Orifice (DN)	
08.0	
10.0	
15.0	
20.0	
25.0	
32.0	
40.0	
50.0	
65.0	
80.0	
0100	

Seal Material (DWST)	
AB	EPDM
FE	FEP

Material (WKST)	
VI	1.4435 acc. to BN2 and 316L acc. to ASME BPE table DT3
HA	Hastelloy C22
VU	1.4539
VV	1.4410
VN	1.4547

Internal polishing	
NO10	int. electro polished (Standard) Ra = 0,8 µm
Certificate	
NK52	3.1 Certificate (Standard)

Characteristic size function part (KGFT)	
GA	Inside calibration Borosilicate glass
GC	Borosilicate glass with Polyurethane coating

LTA clamp connection						
Orifice			DIN 32676 row A (DIN-Rohr (DIN11850))	DIN 32676 row B (ISO-Rohr (ISO4200))	DIN 32676 row C (ASME BPE)	
DN	8	1/4"	TD40 - 10.0x1.0 Cl: 25.0	TC40 - 13.5x1.6 Cl: 25.0	TG50 - 6.35x0.89 Cl: 25.0	
DN	10	3/8"	TD41 - 13.0x1.5 Cl: 34.0	TC53 - 17.2x1.6 Cl: 25.0	TG01 - 9.53x0.89 Cl: 25.0	
DN	15	1/2"	TD42 - 19.0x1.5 Cl: 34.0	TC52 - 21.3x1.6 Cl: 50.5	TG02 - 12.7x1.65 Cl: 25.0	
DN	20	3/4"	TD43 - 23.0x1.5 Cl: 34.0	TC43 - 26.9x1.6 Cl: 50.5	TG03 - 19.05x1.65 Cl: 25.0	
DN	25	1"	TD44 - 29.0x1.5 Cl: 50.5	TC44 - 33.7x2.0 Cl: 50.5	TG04 - 25.4x1.65 Cl: 50.5	
DN	40	1 1/2"	TD46 - 41.0x1.5 Cl: 50.5	TC46 - 48.3x2.0 Cl: 64.0	TG05 - 38.1x1.65 Cl: 50.5	
DN	50	2"	TD47 - 53.0x1.5 Cl: 64.0	TC47 - 60.3x2.0 Cl: 77.5	TG06 - 50.8x1.65 Cl: 64.0	
DN	65	2 1/2"	TD48 - 70.0x2.0 Cl: 91.0	TC48 - 76.1x2.0 Cl: 91.0	TG07 - 63.5x1.65 Cl: 77.5	
DN	80	3"		TC49 - 88.9x2.3 Cl: 106.0	TG08 - 76.2x1.65 Cl: 91.0	
DN	100	4"		TC50 - 114.3x2.3 Cl: 130.0	TG09 - 101.6x2.11 Cl: 119.0	

LTA weldend								
Orifice			DIN 11850 row 0	DIN 11850 row 1	DIN 11850 row 2 DIN 11866 row A	DIN EN ISO 1127 DIN 11866 row B	ISO 4200	ASME BPE DIN 11866 row C
DN	8	1/4"	SC42 - 10.0x1.0		SD40 - 13.0x1.5	SA40 - 13.5x1.6		SA90 - 6.35x0.89
DN	10	3/8"		SF40 - 12.0x1.0	SD41 - 17.2x1.6	SA41 - 17.2x1.6		SA91 - 9.53x0.89
DN	15	1/2"	SC43 - 18.0x1.5	SF41 - 18.0x1.0	SD42 - 19.0x1.5	SA42 - 21.3x1.6		SA92 - 12.7x1.65
DN	20	3/4"	SC44 - 22.0x1.5	SF42 - 22.0x1.0	SD43 - 23.0x1.5	SA43 - 26.9x1.6		SA93 - 19.05x1.65
DN	25	1"	SC45 - 28.0x1.5	SF43 - 28.0x1.0	SD44 - 29.0x1.5	SA44 - 33.7x2.0		SODF - 25.4x1.65
DN	40	1 1/2"	SC46 - 34.0x1.5	SF45 - 40.0x1.0	SD46 - 41.0x1.5	SA46 - 48.3x2.0		SODH - 38.1x1.65
DN	50	2"	SC47 - 40.0x1.5	SF46 - 52.0x1.0	SD47 - 53.0x1.5	SA47 - 60.3x2.0		SODI - 50.8x1.65
DN	65	2 1/2"	SC48 - 52.0x1.5		SD48 - 70.0x2.0	SA48 - 76.1x2.0		SODJ - 63.5x1.65
DN	80	3"			SD49 - 85.0x2.0	SA49 - 88.9x2.3		SODK - 76.2x1.65
DN	100	4"			SD50 - 104.0x2.0	SA39 - 114.3x2.3		SODL - 101.6x2.11

DTS 1000148923 EN Version: D Status: RL (released | freigegeben | valide) printed: 05.05.2014