

BBS-3F

Flow indicators with
Clamp connection



Inline flow indicators with Clamp connection, Full view and standard version



- Guaranteed crevice free
- Fully traceable wetted materials
- Suitable for CIP and SIP
- Glass mounted without stress

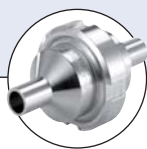
Hygienic Processing Components.....



Type BBS-05
Quick connect



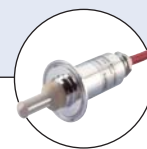
Type BBS-07
Block flange



Type BBS-10
Check valve



Type 2103
Diaphragm valve



Type 8221
Conductivity sensor



Type 8650
Process Automation

These sterile flow indicators can be installed in any position to observe liquid flow in any direction.

The flow indicator is usually employed to detect either the presence or absence of solutions, or to observe fluids for turbulence, colour or clarity.

They are ideal for high purity applications.

The standard view indicator offers excellent process visualization whilst protecting the glass and the full view version allows a 360° process vision, this means you can observe fluid flow from any position.

Technical data

Available standard sizes

Full view version

ISO DN08 to DN100
BS-OD DN1/4" up to DN4"

Standard version

DIN DN08 up to DN100
ISO DN08 up to DN50
BS-OD DN1/4" up to DN2"
DIN DN08 to DN50
Customized on request

Material medium contact

Stainless steel 1.4435 BN2 (316L)
Special materials on request

Material medium separated

1.4305 or equivalent

Glass

Borosilicate glass

Seals

O-Ring, EPDM, FEP (PTFE coated silicone O-Ring)
special seal material e.g. silicone, pure PTFE etc.
on request

Surface quality

Medium contacted surface < Ra 0,8µm,
electro polished, finer surface on request

Operating temperature

Dependent upon the chosen seal material

Ambient temperature

-20 to +80 °C

Media

Gases or liquids

Operating pressure

-1 up to +8 bar (higher pressure on request)

Applicable Standards

Clamp connection acc. to DIN 32676
ISO-Dimensions Series B
DIN-Dimensions Series A
BS-OD-Dimensions Series C (ASME BPE)

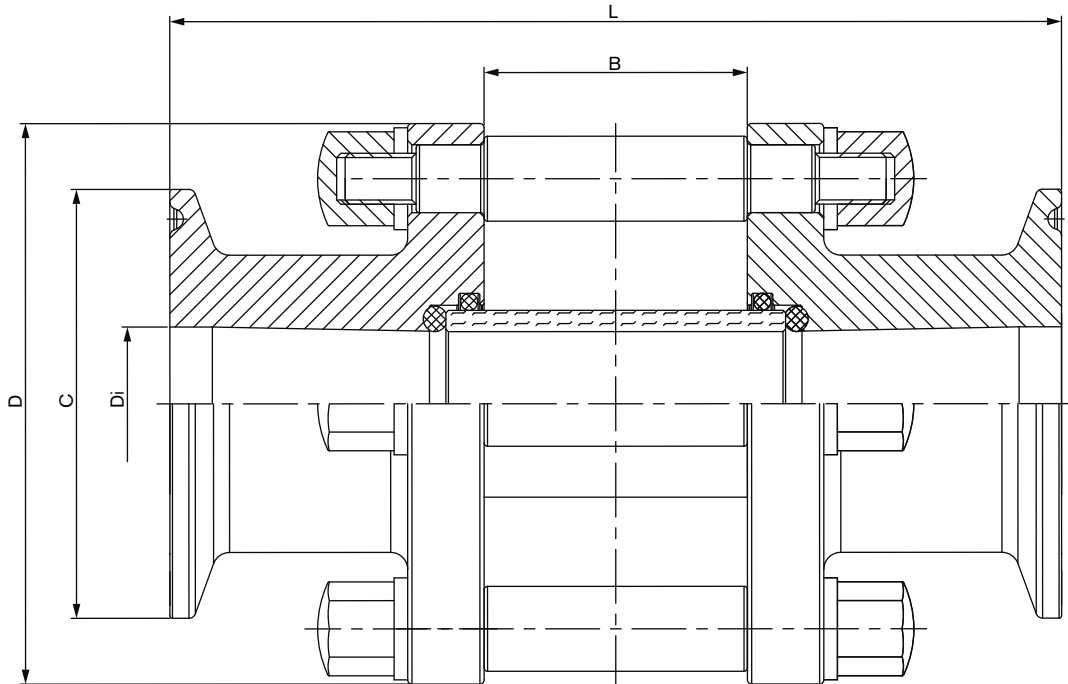
Certifications

Material 3.1
FDA for all recommended seal materials
USP VI for EPDM, FEP and PTFE

Applications

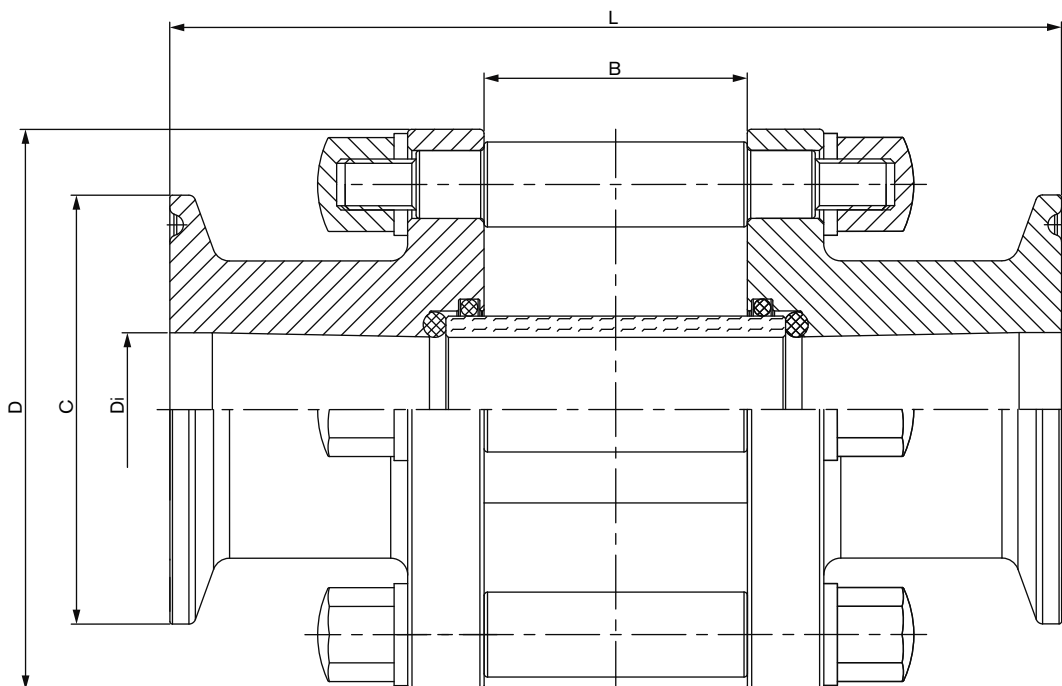
- Biotechnology
- Pharmaceutical
- Chemical industry
- Dairy
- Food
- Cosmetic

Dimensions [mm] Inline flow indicator with Clamp connection / full view version



Orifice	D [mm]	C [mm]	Di [mm]	B [mm]	L [mm]	Item no. EPDM	Item no. FEP
ISO Dimensions Inline flow indicator with Clamp connection / full view version							
DN08	59.00	25.00	10.30	19.50	91.00	741 399	741 401
DN10	59.00	25.00	14.00	26.40	91.00	741 409	741 411
DN15	66.00	50.50	18.10	31.00	111.00	741 429	741 431
DN20	73.00	50.50	23.70	32.00	111.00	741 436	741 438
DN25	73.00	50.50	29.70	32.00	111.00	741 448	741 450
DN32	90.00	64.00	38.40	41.20	121.00	741 458	741 460
DN40	88.00	64.00	44.30	67.00	146.00	741 466	741 468
DN50	124.10	77.50	56.30	80.00	171.00	741 474	741 476
DN65	135.00	91.00	71.50	94.00	185.00	741 481	741 483
DN80	145.00	106.00	84.30	97.00	196.00	741 488	741 490
DN100	178.00	130.00	109.10	118.00	209.00	741 417	741 419

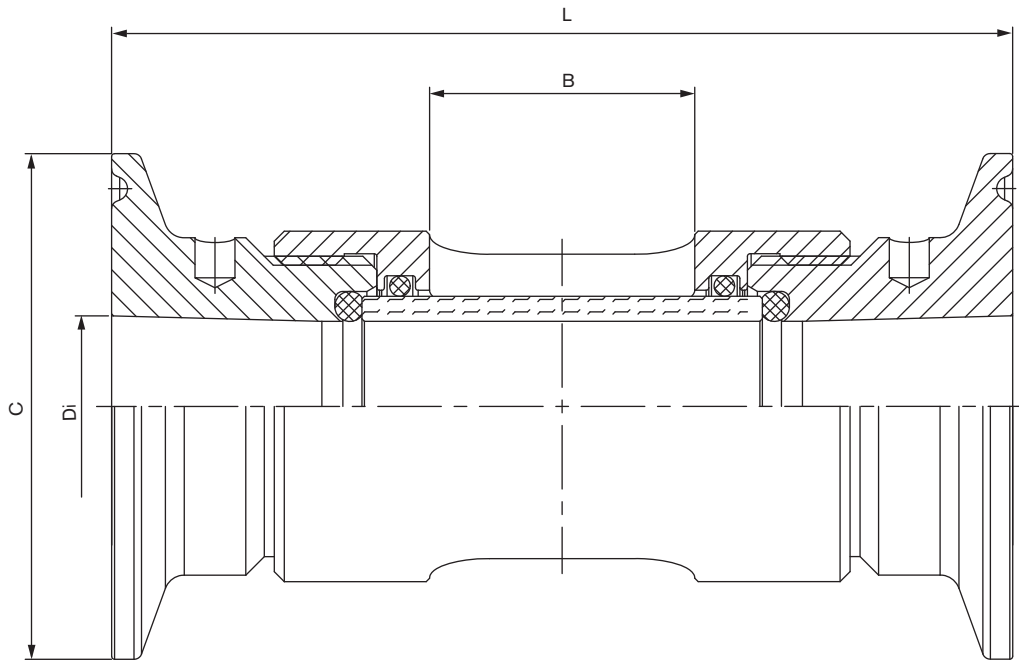
Dimensions [mm] Inline flow indicator with Clamp connection / full view version



Orifice	D [mm]	C [mm]	Di [mm]	B [mm]	L [mm]	Item no. EPDM	Item no. FEP
BS-OD Dimensions Inline flow indicator with Clamp connection / full view version							
DN1/4"	50.00	25.00	4.57	19.50	91.50	743 027	743 028
DN3/8"	50.00	25.00	7.75	19.50	91.50	741 502	741 503
DN1/2"	59.00	25.00	9.40	19.50	91.50	741 511	741 513
DN3/4"	65.00	25.00	15.75	33.00	105.00	741 520	741 522
DN1"	73.00	50.50	22.10	36.00	105.00	741 537	741 541
DN1 1/2"	82.00	50.50	34.80	37.00	105.00	741 552	741 554
DN2"	100.00	64.00	47.50	54.00	140.00	741 565	741 567
DN2 1/2"	124.00	77.50	60.20	67.00	151.00	741 574	741 576
DN3"	135.00	91.00	72.90	97.00	181.00	741 586	741 588
DN4"	159.00	119.00	97.38	119.00	206.00	741 596	741 598

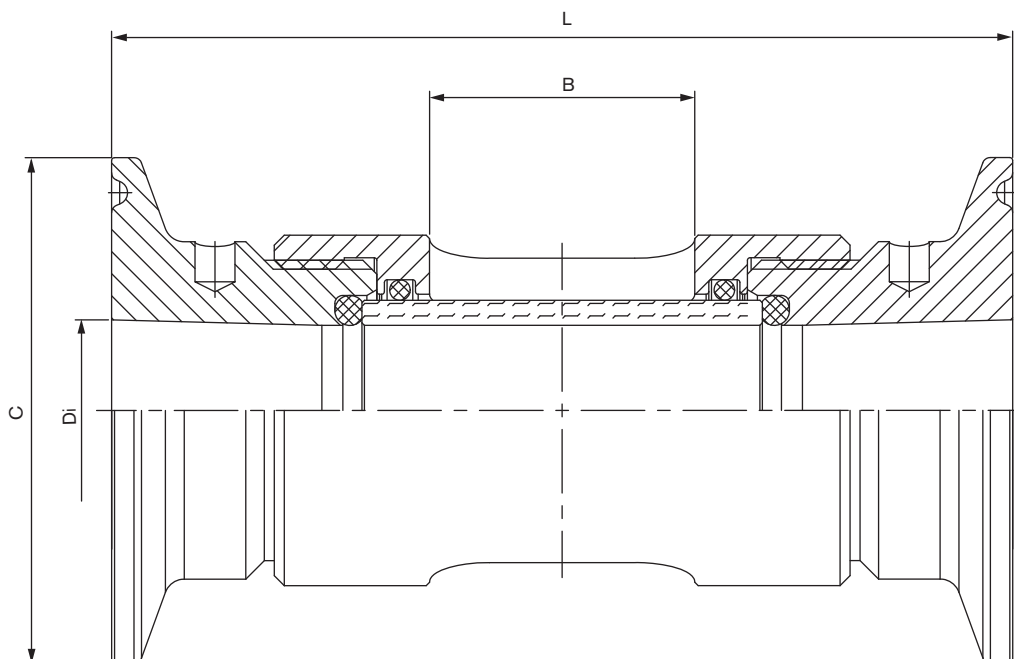
Orifice	D [mm]	C [mm]	Di [mm]	B [mm]	L [mm]	Item no. EPDM	Item no. FEP
DIN Dimensions Inline flow indicator with Clamp connection / full view version							
DN08	59.00	25.00	8.00	19.50	91.00	on request	on request
DN10	59.00	34.00	10.00	19.50	91.00	on request	on request
DN15	65.00	34.00	16.00	31.00	105.00	on request	741 617
DN20	70.00	34.00	20.00	32.00	105.00	on request	on request
DN25	80.00	50.50	26.00	32.00	105.00	on request	on request
DN32	80.00	50.50	32.00	32.00	105.00	on request	on request
DN40	90.00	50.50	38.00	41.20	121.00	on request	on request
DN50	100.00	64.00	50.00	67.00	140.00	on request	on request
DN65	130.00	91.00	66.00	67.00	148.00	on request	on request
DN80	145.00	106.00	81.00	110.00	196.00	741 638	on request
DN100	160.00	119.00	100.00	97.00	184.00	on request	on request

Dimensions [mm] Inline flow indicator with Clamp connection / standard



Orifice	C [mm]	Di [mm]	B [mm]	L [mm]	Item no. EPDM	Item no. FEP
ISO Dimensions Inline flow indicator with Clamp connection / standard						
DN08	25.00	9.40	20.00	76.00	741 395	741 397
DN10	25.00	14.00	20.00	76.00	741 403	741 405
DN15	50.50	18.10	24.00	92.00	741 425	741 427
DN20	50.50	23.70	24.00	92.00	741 433	741 434
DN25	50.50	29.70	24.00	92.00	741 444	741 446
DN32	64.00	38.40	32.00	115.00	741 454	741 456
DN40	64.00	44.30	48.00	120.00	741 462	741 464
DN50	77.50	56.30	80.00	187.00	741 470	741 472

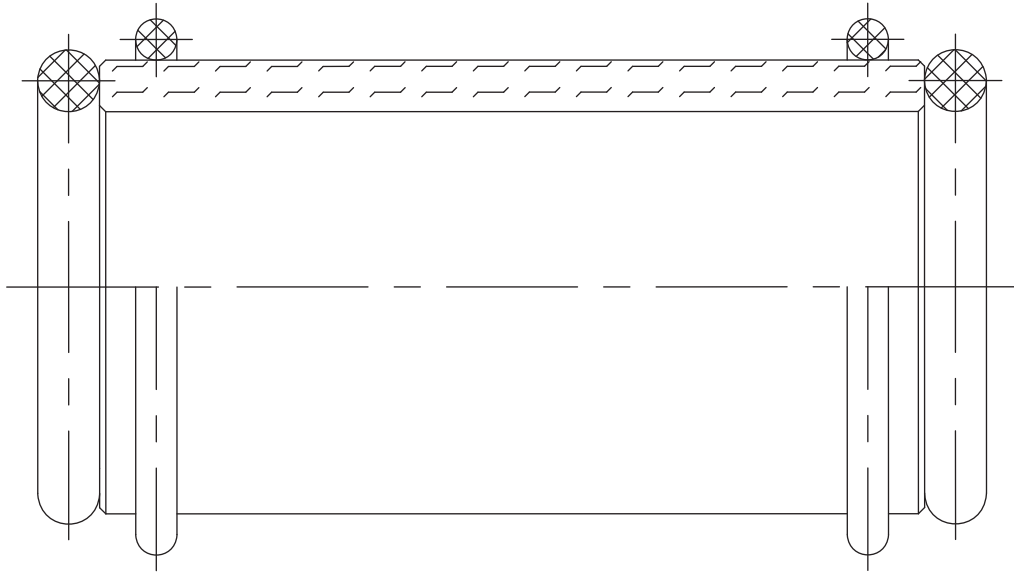
Dimensions [mm] Inline flow indicator with Clamp connection / standard



Orifice	C [mm]	Di [mm]	B [mm]	L [mm]	Item no. EPDM	Item no. FEP
BS-OD Dimensions Inline flow indicator with Clamp connection / standard						
ASME DN1/4"	25.00	4.60	20.00	76.00	741 492	741 496
ASME DN3/8"	25.00	7.75	20.00	76.00	741 498	741 500
ASME DN1/2"	25.00	9.40	20.00	76.00	741 505	741 509
ASME DN3/4"	25.00	15.75	30.00	92.00	741 516	741 518
ASME DN1"	50.50	22.10	30.00	92.00	741 530	741 533
ASME DN1 1/2"	50.50	34.80	32.00	115.00	741 546	741 550
ASME DN2"	64.00	47.50	48.00	120.00	741 560	741 563

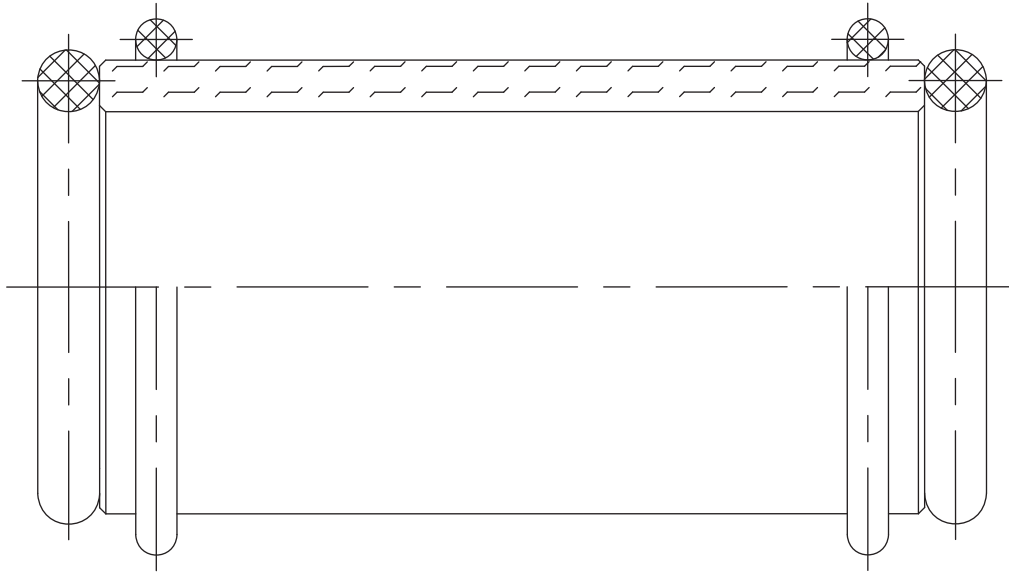
Orifice	C [mm]	Di [mm]	B [mm]	L [mm]	Item no. EPDM	Item no. FEP
DIN Dimensions Inline flow indicator with Clamp connection / standard						
DN08	25.00	8.00	20.00	76.00	on request	on request
DN10	34.00	10.00	20.00	76.00	743 903	on request
DN15	50.50	16.00	30.00	92.00	741 612	741 615
DN20	50.50	20.00	30.00	92.00	741 619	on request
DN25	50.50	26.00	32.00	92.00	741 623	734 168
DN 32	50.50	32.00	32.00	92.00	741 625	741 627
DN40	64.00	38.00	32.00	120.00	741 629	on request
DN50	64.00	50.00	48.00	120.00	741 631	on request

Spare parts kit for flow indicator



Orifice	Item no. EPDM	Item no. FEP
ISO Spare parts kit (consisting of glass, O-Ring and support ring)		
DN08	740 492	740 495
DN10	740 500	744 722
DN15	740 515	740 518
DN20	740 527	740 530
DN25	740 539	740 542
DN32	740 552	740 555
DN40	740 561	740 564
DN50	740 573	740 575
DN65	744 727	744 728
DN80	740 581	740 581
DN100	744 729	744 724

Spare parts kit for flow indicator



Orifice	Item no. EPDM	Item no. FEP
DIN Spare parts kit (consisting of glass, O-Ring and support ring)		
DN08	740 316	744 678
DN10	744 679	744 680
DN15	744 683	744 684
DN20	744 687	744 688
DN25	744 689	744 690
DN32	744 691	744 692
DN40	744 693	744 694
DN50	740 334	744 695
DN65	744 696	744 697
DN80	744 698	744 699
DN100	744 681	744 682

Orifice	Item no. EPDM	Item no. FEP
BS-OD Spare parts kit (consisting of glass, O-Ring and support ring)		
DN1/4"	744 718	744 719
DN3/8"	744 720	744 721
DN1/2"	740 347	740 350
DN3/4"	740 365	740 368
DN1"	740 381	740 384
DN1 1/2"	740 393	740 396
DN2"	740 417	740 420
DN2 1/2"	740 433	740 436
DN3"	740 446	740 449
DN4"	740 458	740 461

DTS 1000148922 EN Version: C validé printed: 05.05.2014 Status: RL (released | freigegeben |

To find your nearest Bürkert facility, click on the orange box → www.burkert.com

In case of special application conditions,
 please consult for advice.

Subject to alterations
 © Christian Bürkert GmbH & Co. KG

1403/3_EU-en_00895163

Specification key (other versions on request)

Example BBS-3F - XX - 00 - 25,0 - AB - XX - LTA - XX - NK52 + NO10

Specification key

Delivery (LIUM)

ST	Line Standard inspection glass (part vision)
SV	Line inspection glass full vision
SG	Spare part kit for line inspection glass

Connection Type (VRBT)

CA	Clamp-connection acc. to DIN 32676-A
CB	Clamp-connection acc. to ISO 2852 / DIN 32676-B
CC	Clamp-connection acc. to ASME BPE / DIN 32676-C
WA	Welded connection acc. to DIN 11850 row 2 / DIN 11866 row A
WB	Welded connection acc. to DIN EN ISO 1127 / ISO 4200 / DIN 11866 row B
WC	Welded connection acc. to ASME BPE / DIN 11866 row C
00	without connection (spare part kit)

Orifice (DN)

08.0
10.0
15.0
20.0
25.0
32.0
40.0
50.0
65.0
80.0
0100

Seal Material (DWST)

AB	EPDM
FE	FEP

Material (WKST)

VI	1.4435 acc. to BN2 and 316L acc. to ASME BPE table DT3
HA	Hastelloy C22
VU	1.4539
VV	1.4410
VN	1.4547

Internal polishing

NO10	int. electro polished (Standard) Ra = 0,8 µm
------	--

Certificate

NK52	3.1 Certificate (Standard)
------	----------------------------

Characteristic size function part (KGFT)

GA	Inside calibration Borosilicate glass
GC	Borosilicate glass with Polyurethane coating

LTA clamp connection

Orifice		DIN 32676 row A (DIN-Rohr (DIN11850))	DIN 32676 row B (ISO-Rohr (ISO4200))	DIN 32676 row C (ASME BPE)
DN 8	1/4"	TD40 - 10.0x1.0 Cl: 25.0	TC40 - 13.5x1.6 Cl: 25.0	TG50 - 6.35x0.89 Cl: 25.0
DN 10	3/8"	TD41 - 13.0x1.5 Cl: 34.0	TC53 - 17.2x1.6 Cl: 25.0	TG01 - 9.53x0.89 Cl: 25.0
DN 15	1/2"	TD42 - 19.0x1.5 Cl: 34.0	TC52 - 21.3x1.6 Cl: 50.5	TG02 - 12.7x1.65 Cl: 25.0
DN 20	3/4"	TD43 - 23.0x1.5 Cl: 34.0	TC43 - 26.9x1.6 Cl: 50.5	TG03 - 19.05x1.65 Cl: 25.0
DN 25	1"	TD44 - 29.0x1.5 Cl: 50.5	TC44 - 33.7x2.0 Cl: 50.5	TG04 - 25.4x1.65 Cl: 50.5
DN 40	1 1/2"	TD46 - 41.0x1.5 Cl: 50.5	TC46 - 48.3x2.0 Cl: 64.0	TG05 - 38.1x1.65 Cl: 50.5
DN 50	2"	TD47 - 53.0x1.5 Cl: 64.0	TC47 - 60.3x2.0 Cl: 77.5	TG06 - 50.8x1.65 Cl: 64.0
DN 65	2 1/2"	TD48 - 70.0x2.0 Cl: 91.0	TC48 - 76.1x2.0 Cl: 91.0	TG07 - 63.5x1.65 Cl: 77.5
DN 80	3"		TC49 - 88.9x2.3 Cl: 106.0	TG08 - 76.2x1.65 Cl: 91.0
DN 100	4"		TC50 - 114.3x2.3 Cl: 130.0	TG09 - 101.6x2.11 Cl: 119.0

LTA weldend

Orifice		DIN 11850 row 0	DIN 11850 row 1	DIN 11850 row 2 DIN 11866 row A	DIN EN ISO 1127 DIN 11866 row B	ISO 4200	ASME BPE DIN 11866 row C
DN 8	1/4"	SC42 - 10.0x1.0		SD40 - 13.0x1.5	SA40 - 13.5x1.6		SA90 - 6.35x0.89
DN 10	3/8"		SF40 - 12.0x1.0	SD41 - 17.2x1.6	SA41 - 17.2x1.6		SA91 - 9.53x0.89
DN 15	1/2"	SC43 - 18.0x1.5	SF41 - 18.0x1.0	SD42 - 19.0x1.5	SA42 - 21.3x1.6		SA92 - 12.7x1.65
DN 20	3/4"	SC44 - 22.0x1.5	SF42 - 22.0x1.0	SD43 - 23.0x1.5	SA43 - 26.9x1.6		SA93 - 19.05x1.65
DN 25	1"	SC45 - 28.0x1.5	SF43 - 28.0x1.0	SD44 - 29.0x1.5	SA44 - 33.7x2.0		SODF - 25.4x1.65
DN 40	1 1/2"	SC46 - 34.0x1.5	SF45 - 40.0x1.0	SD46 - 41.0x1.5	SA46 - 48.3x2.0		SODH - 38.1x1.65
DN 50	2"	SC47 - 40.0x1.5	SF46 - 52.0x1.0	SD47 - 53.0x1.5	SA47 - 60.3x2.0		SODI - 50.8x1.65
DN 65	2 1/2"	SC48 - 52.0x1.5		SD48 - 70.0x2.0	SA48 - 76.1x2.0		SODJ - 63.5x1.65
DN 80	3"			SD49 - 85.0x2.0	SA49 - 88.9x2.3		SODK - 76.2x1.65
DN 100	4"			SD50 - 104.0x2.0	SA39 - 114.3x2.3		SODL - 101.6x2.11