

2/2 and 3/2-way Rocker Solenoid Valve for analytical applications



Type 6606 can be combined with...



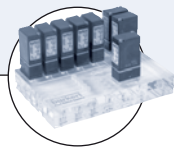
Type 2506

Cable plug form C



Type 2505

Rectangular Cable plug

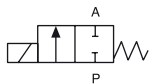


Manifolds

- With isolating diaphragm
- Low dead volume, low internal volume
- For aggressive media
- High back-pressure tightness
- NC, NO or universal circuit function
- Compact 16 mm design

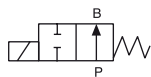
The direct-acting rocker solenoid valves with isolating diaphragm of Type 6606 (2/2- and 3/2-way) are high quality valves for analytical technology. They have minimal dead volume and internal volume with few crevices making them easy to flush out. The fluid only comes into contact with the body material and the FFKM seal. The heat transfer to the medium is minimal. The fluid path is isolated from the coil by a stainless steel plate. The valves are ideal for dosing, filling, mixing and distributing of small quantities of fluid for medical, analytical and laboratory applications.

Circuit function A



2/2-way valve, direct-acting, normally closed

Circuit function B



2/2-way valve, direct-acting, normally open

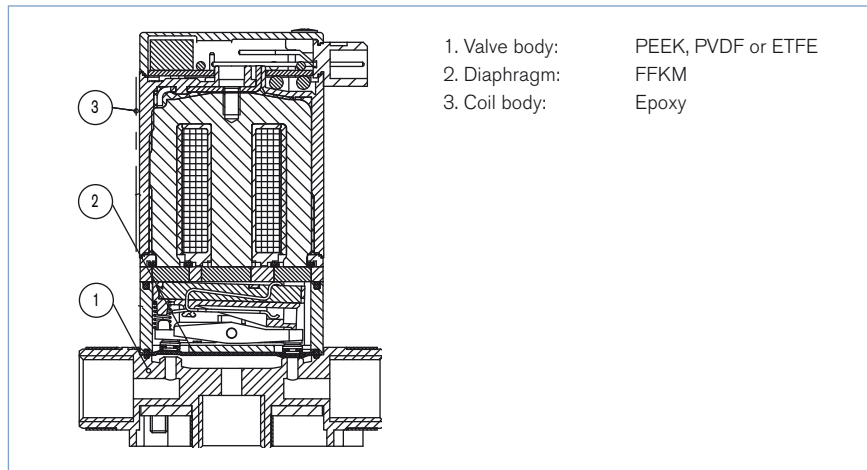
Circuit function T



3/2-way valve, direct-acting, universal functions

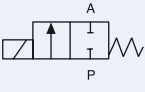
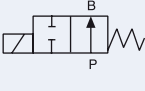
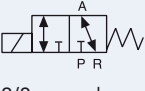
| Technical data | |
|------------------------------|---|
| Orifice | DN 1.5 - 1.6 mm |
| Body material | PEEK, PVDF, ETFE |
| Seal material | FFKM |
| Media | Resistant to neutral and aggressive liquids and gases; see Burkert chemical resistance chart |
| Temperature media | 0 to 50 °C |
| Ambient temperature | Max +55°C |
| Internal volume | Depending on body |
| NPT 1/8, G 1/8 | 85µl |
| Flange | 68µl |
| Body UNF | 30µl (2/2way); 55µl (3/2way) |
| On request | <10µl |
| Operating voltage | 12 and 24V/DC ; other voltages on request |
| Voltage tolerance | ± 10% |
| Power consumption | 3.4 W |
| Duty cycle | 100% continuous rating |
| Electrical connection | Rectangular plug, Type 2505 Spade connection acc. to DIN 43650 C for cable plug Type 2506 on top 2 FEP flying leads, AWG24, 500mm long Circular connector and spade connection at side on request |
| Protection class | IP65 with flying leads or with cable plug IP40 with rectangular plug |
| Installation | As required, preferably with actuator in upright position |
| Response times | According to ISO 12238:2001; Measured at valve outlet with air at 2 bar and +20 °C |
| Open | approx. 25 ms (Pressure rise 0 to 10%) |
| Close | approx. 25 ms (Pressure drop 100 to 90%) |

Materials



Ordering chart for Type 6606 (other versions on request)

All valves with FFKM seal material, spade connector version without cable plug (see accessories)

| Circuit function | Port connection | Oorifice [mm] | Kv value water [m ³ /h] ¹⁾ | Kv value water [l/min] | QNm value air [l/min] | Pressure range [bar] ²⁾ | Body material | Electrical Connection | Voltage/Frequency [V/Hz] | Item No. |
|--|-----------------|---------------|--|------------------------|-----------------------|------------------------------------|---------------|--------------------------|--------------------------|----------|
|  2/2-way valve direct acting Normally closed | UNF 1/4-28 | 1.5 | 0.039 | 0.66 | 42 | Vac- 2 | ETFE | Flying leads, 500 mm | 024/DC | 137 759 |
| | G 1/8 | 1.6 | 0.060 | 1.02 | 65 | Vac- 2 | PVDF | Rectangular plug | 024/DC | 139 146 |
| | Tube connection | 1.6 | 0.039 | 0.66 | 42 | Vac- 2 | PVDF | Flying leads , 500 mm | 024/DC | 137 764 |
| | | | | | | | | Rectangular plug | 024/DC | 139 147 |
| | Sub-base | 1.6 | 0.039 | 0.66 | 42 | Vac- 2 | PEEK | Flying leads , 500 mm | 012/DC | 137 744 |
| | | | | | | | | | 024/DC | 137 745 |
| Spade connector sidwards | | | | | | | | 024/DC | 137 741 | |
|  2/2-way valve direct acting Normally open | G 1/8 | 1.6 | 0.060 | 1.02 | 65 | Vac- 2 | PVDF | Spade connector sidwards | 024/DC | 137 747 |
| | | | | | | | | | | |
|  3/2-way valve direct acting Universal functions | UNF 1/4-28 | 1.5 | 0.025 | 0.43 | 27 | Vac- 2 | ETFE | Flying leads, 500 mm | 024/DC | 137 779 |
| | G 1/8 | 1.6 | 0.047 | 0.80 | 51 | Vac- 2 | PVDF | Flying leads, 500 mm | 024/DC | 137 771 |
| | Tube connection | 1.6 | 0.025 | 0.43 | 27 | Vac- 2 | PVDF | Rectangular plug | 024/DC | 139 149 |
| | | | | | | | | Spade connector sidwards | 024/DC | 137 769 |
| | | | | | | | | Flying leads , 500 mm | 012/DC | 137 782 |
| | Sub-base | 1.6 | 0.032 | 0.54 | 35 | Vac- 2 | PEEK | | 024/DC | 137 783 |
| | | | | | | | | Rectangular plug | 024/DC | 139 150 |
| | | | | | | | | Spade connector sidwards | 012/DC | 137 781 |
| | | | | | | | | Spade connector sidwards | 024/DC | 137 768 |
| | | | | | | | | | 024/DC | 139 148 |
| | | | | | | | | 012/DC | 137 766 | |
| | | | | | | | | 024/DC | 137 765 | |

¹⁾ Measured at +20°C , 2 bar pressure at valve inlet and 1bar at outlet²⁾ Gauge pressure with respect to the prevailing atmosphere pressure

Dimensions [mm]

