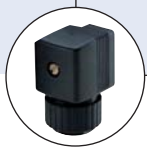




2/2 and 3/2-way Solenoid Valve for aggressive fluids

- Pivoted armature valve with manual override
- Direct-acting with hermetic isolation of fluid
- Different circuit functions
- Body in plastic and stainless steel
- Seal materials suitable for aggressive mediums

Type 0121 can be combined with...



Type 2508

Cable plug

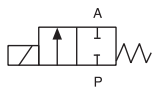


Type 1078

Timer unit

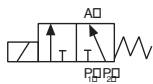
Type 0121 is a high quality, direct-acting 2/2 or 3/2 pivoted armature solenoid valve that can be used in a wide range of applications for opening, closing, dosing, mixing and distributing. The separation between the magnetic system and the medium chamber consists of an intermediate separating diaphragm system. The valve is particularly suitable for aggressive media

Circuit function A



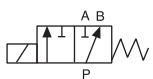
A 2/2-way valve NC

Circuit function E



3/2-way mixer valve

Circuit function F



3/2-way distributor valve

Technical data

Orifice	DN2.0 to 8.0
Body material	PTFE, (PP, PVDF on request) PVC (resistant acc. to DIN 8062, 8061) Stainless steel 1.4401
Seal materials medium	FKM, FFKM, (EPDM on request) Oxydizing acids and substances, oils, salt solutions, waste gases, technical vacuum
FKM	The valve is particularly suitable for aggressive media, aromatic compound, ether, ester, ketone (please see Bürkert chemical resistance chart)
FFKM	
Medium temperature	
body + seal (Material combination)	
PVC + FKM	-10 to +50 °C
PTFE/St. st. + FKM	-10 to +90 °C
PTFE/St. st. + FFKM	-10 to +90 °C
Ambient temperature	max. +50 °C
Viscosity	max. 37 mm ² /s
Voltage tolerance	±10%
Cycling rate	max. 100/min with AC max. 10/min with UC
Duty cycle	
Continuous operation	St. st. body 100% ED and with universal Current (UC) with PVC 10% ED (10 min) with PP, PTFE and PVDF body (40% ED, 10 min)
Intermittent operation	
Electrical connection	
with AC and DC	Cable plug for cable Ø 6 - 7 mm (supplied as standard) or cable connection
Protection class	IP 65 with cable or cable plug
Installation	As required, preferably with actuator upright

Technical data, continued

Power consumption						Response times		Weight	
Inrush		[VA]				Open	Closed	PTFE	Stainless steel
AC [VA]	UC [W]	AC [VA/W]	UC [W]	DC cold [W]	DC [W]	[ms]	[ms]	[kg]	[kg]
30	40	15/8	3	11-12	8	15-20	15-20	0.5	0.9

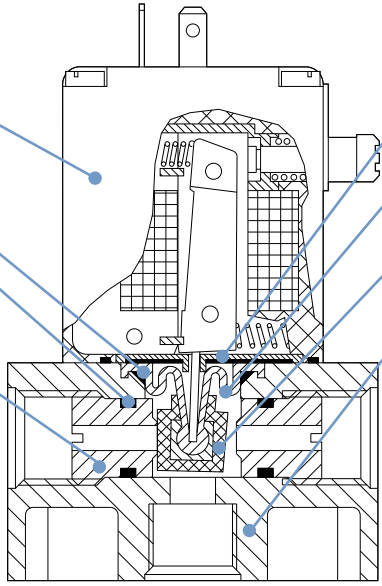
Response times [ms]:

Measured at valve outlet at 6 bar and +20°C.

Opening: Pressure build-up 0 - 90%

Closing: pressure relief 100 to 10%

Materials



8. Coil body: Epoxy

7. Isolating diaphragm: FKM, EPDM, FFKM

6. Seal: PTFE

3. Toggle pin: Hostaflon TF 1502

5. O-rings: FKM, EPDM

2. Seal: FFKM FKM

4. Seat: see table on the right

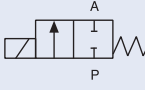
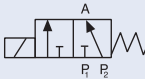
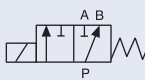
1. Valve body: see table below (PVDF, PP on request)

Body material	Seat material
Stainless steel	1.4571
PTFE	PTFE
PVC	PVC

(Sectional drawing of version with PVC body and FKM seal)

Ordering chart for valves (other versions on request)

valves with plastic or stainless steel body, manual override and cable plug (UC with silicon cable, see footnote)

Circuit function	Port connection	Orifice [mm]	Kv value water [m ³ /h]	Pressure range [bar]	Body material	Seal material	Voltage/frequency [V/Hz]	Item no.	
A 2/2-way valve NC 	Stainless steel body								
	G 1/4	4.0	0.3	0-2	St. st.	FKM	024/DC	055 244	
				0-4	St. st.	FKM	024/50	056 934	
		6.0	0.6	0-1	St. st.	FKM	042/50	052 817	
				0-2	St. st.	FKM	230/50	052 441	
			0.6	0-1	St. st.	FKM	024/DC	040 482	
				0-2	St. st.	FKM	024/50	057 086	
	0.6	110/50	067 659						
		230/50	054 595						
	Plastic body PVC								
	G 3/8	4.0	0.3	0 - 2	PVC	FKM	024/DC	049 654	
				0 - 4	PVC	FKM	024/50	048 940	
				230/50	047 859				
		6.0	0.6	0 - 1	PVC	FKM	024/DC	048 749	
0 - 2				PVC	FKM	024/50	049 348		
110/50				050 553					
0.6		0.6	230/50	047 810					
			0 - 1	PVC	FKM	024/UC	048 697		
			024/50	052 800					
230/50		052 302							
E 3/2-way mixer valve 		Stainless steel body							
		G 1/4	4.0	0.3	0-2	St. st.	FKM	230/50	042 457
	Plastic body PTFE								
	G 3/8	4.0	0.3	0 - 2	PTFE	FFKM	024/UC	130 933	
							230/50	130 934	
F 3/2-way distributor valve 	Plastic body PVC								
	G 3/8	6.0	0.6	0 - 1	PVC	FKM	024/DC	049 533	
				0 - 2	PVC	FKM	024/50	052 181	
							110/50	050 336	
						230/50	047 916		

Note: UC with internal high-performance coil (60 W Inrush, 3 W hold) and moulded-in 1m silicon cable

i Further versions on request



Materials

Body material PP, PVDF.
Seal materials EPDM, various body and seal material combinations.



Circuit function

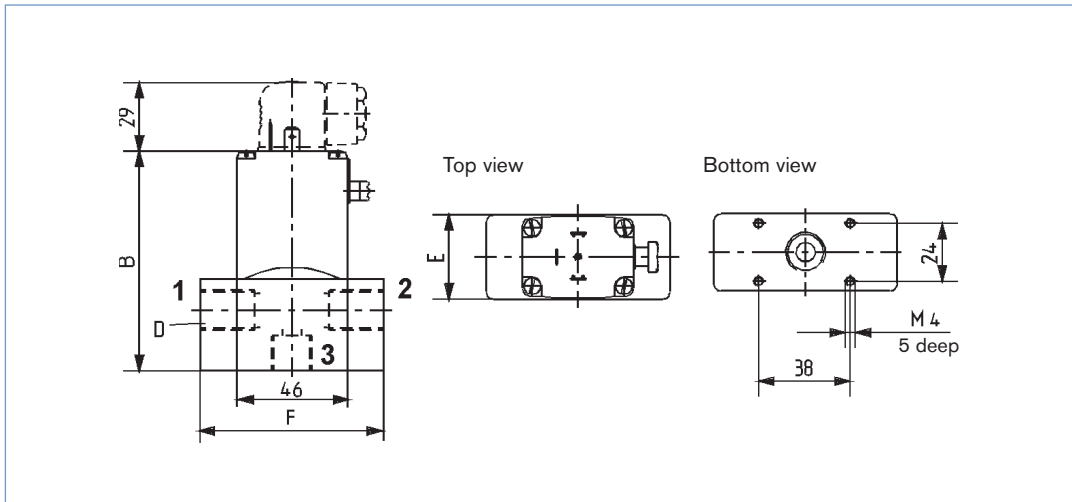
Other circuit functions, e.g. 2/2-way normally open.



Additional

ATEX Version (see Type 789).
Optical or electrical feedback unit.

Dimensions [mm]



Body material	D	B	E	F
Stainless steel	G 1/4	89	32	76
PVC	G 3/8	91	35	65

Possible port configurations			
Circuit function	1	2	3
A	P	-	A
E	P1	P2	A
F	A	B	P

To find your nearest Bürkert facility, click on the orange box →

www.burkert.com

 In case of special application conditions,
 please consult for advice.

 Subject to alterations
 © Christian Bürkert GmbH & Co. KG

0901/4_EU-en_00891601